

Explore. Study. Live.



**Tasmanian Government Schools
International Student Program | 2024**





Explore, study and live in Tasmania

If you're ready to embark on a once-in-a-lifetime journey to study and live in Tasmania, you're in the right place.

Tasmania is a study destination where quality education, modern facilities, vibrant cities, diverse culture and art scene, and island lifestyle combine to open doors to lifelong opportunities.

Our cities are fun and beautiful, yet they are among the safest in the world. We are never far from the wilderness and its native animals, the land and sea, clean air and clean water.

In Tasmania, you can hear yourself think yet you won't feel alone. We want to know your story and be part of it.

Embrace the diversity in Tasmania and make it your strength.



Contents

Explore.

Why Tasmania?	4
Why Tasmanian Government Schools?	5

Study.

The Tasmanian Education System	6
Junior High School (Year 7 – 10)	7
Senior High School (Year 11 – 12)	8
Short-term study programs	9
Study tour programs	10

Campus guide.

Clarence High School	13
Kingston High School	14
Taroona High School	15
Rose Bay High School	16
Hobart City High School	17
Prospect High School	18
Queechy High School	19
Devonport High School	20
Burnie High School	21

Smithton High School	22
Elizabeth College	23
Rosny College	24
Hobart College	25
Launceston College	26
Newstead College	27
Don College	28
Hellyer College	29

Live.

Student accommodation	30
Lifestyle	31
Top 8 things to do in Tasmania	32
Student support and other services	34
2024 international fees and key dates	35

Acknowledgement of Country

We acknowledge the palawa people as the traditional custodians of the land on which we learn and work together and are committed to building relationships and opportunities for all Aboriginal people in our region.



Why Tasmania

1. Safe and welcoming place to live

Tasmanians are known for being helpful and friendly. Our capital city, Hobart, has been recognised as one of the friendliest cities in the world, and has the lowest rates of crime in any Australian capital city.

2. Authentic English-speaking environment

More than 97% of enrolments in Tasmanian Government Schools are local students. This makes Tasmania a perfect place for international students to develop their English skills and enjoy an authentic Australian experience.

3. Affordable living and tuition costs

The cost of living in Tasmania's cities is significantly lower than that of many other cities in Australia. Low homestay and tuition fees mean students will enjoy some of the lowest average weekly costs in Australia.

4. Pristine environment and vibrant community

Tasmania has the cleanest air and some of the purest water in the world. Our island state offers a chance to be part of a growing, thriving community with a lively cultural and arts scene, cafes and restaurants, markets and music festivals.

5. Liveable climate

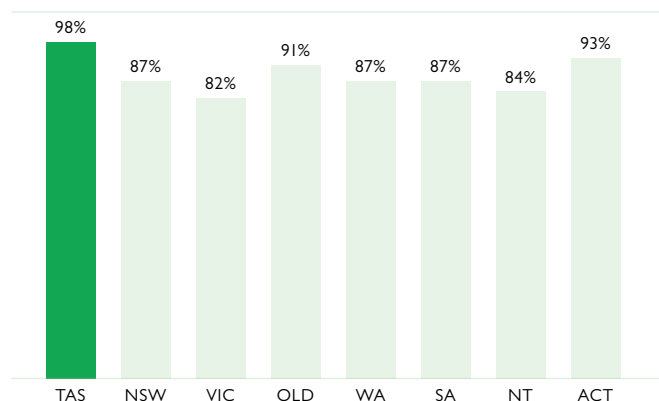
Because we are an island state, Tasmania experiences four distinct seasons and a moderate climate - without the scorching heat or freezing cold found in other student cities. Hobart is Australia's second driest capital city and is usually around 2°C cooler than Melbourne.

Why Tasmanian Government Schools

1. Quality and academic excellence

All Tasmanian Government Schools deliver the Australian curriculum and have a strong history of academic excellence and achieving exceptional results. In Tasmania, 98% of students who apply for university receive an offer – more than in any other Australian state or territory.

Percentage of high school students who receive an offer for university



Australian Government Department of Education & Training

2. Specialised senior schools

The Tasmanian education system divides Junior High Schools (Years 7–10) from specialised Senior High Schools (Years 11–12). Senior High Schools provide a focussed preparation for future study at university, access to specialised facilities and more than 100 exciting subject choices.

3. Tasmanian Government homestay program

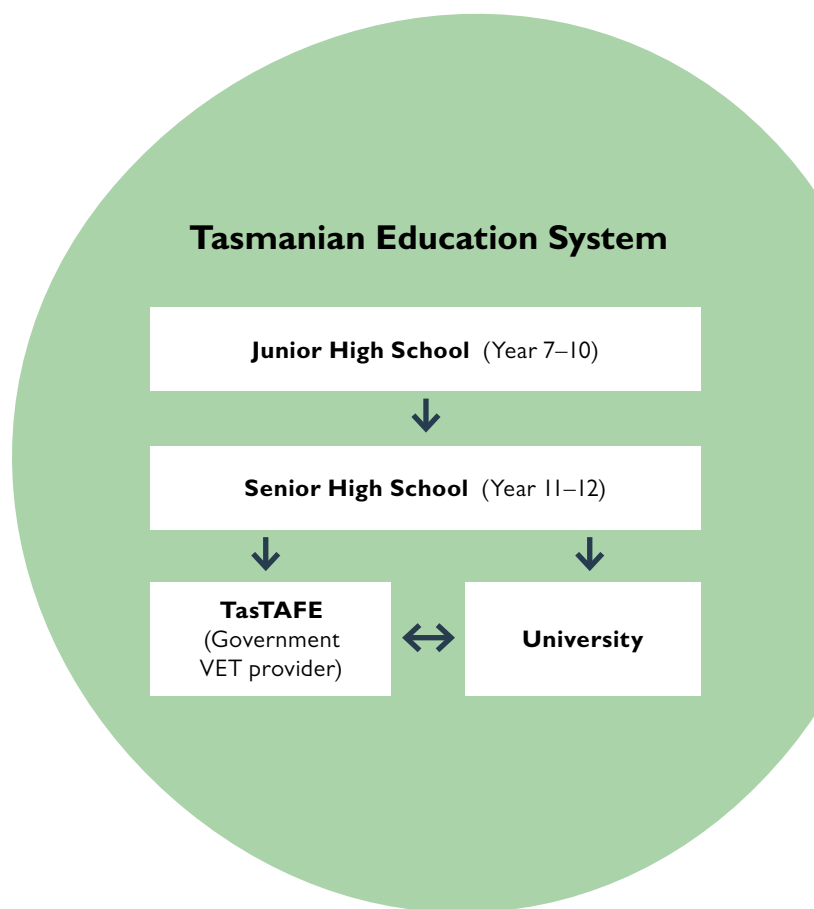
Operated by the Tasmanian Government, our homestay program offers safe, secure and welcoming accommodation for students from Years 7–12 to experience an authentic Australian family and community life. Our team maintains regular direct contact with our host families and ensures all host families meet our high standards for accommodation and student welfare.

4. Wide range of extracurricular activities

Our schools offer free specialty enrichment programs to cater to students' passions and talents. These programs include music, team sports, debating, surfing and kayaking. Students are encouraged to participate in enrichment activities to promote a healthy study/ life balance, practice their English outside of the classroom, and make new friends.

5. Personalised support

Every Tasmanian Government School employs a dedicated International Student Advisor to provide learning and personal support to international students. The Tasmanian Government Education International team manages a 24/7 emergency support line to ensure our students are always able to access help and support when they need it.



The Tasmanian Education System

The Tasmanian Education System

Tasmania's Government School system has a unique structure. Students attend Junior High School from Year 7–10, and then progress to Senior High School for Year 11 and 12. This separation of the two levels of high school allows students to complete their year 11 and 12 education in an environment designed specifically to prepare them for university, vocational education or the workplace. Students are treated as adults and taught a range of important skills to assist them in their future – such as independence, and the ability to manage their studies.

As an international student, you can enter into any school year level. However, if you are under 12 years of age, then a parent or guardian will have to come to Tasmania with you.

School	Age	Year
Primary School	6	1
	7	2
	8	3
	9	4
	10	5
Junior High School	11	6
	12	7
	13	8
	14	9
Senior High School	15	10
	16	11
	17	12



6 out of the top 10 performing schools in Tasmania are Government schools

Tasmanian Certificate of Education (TCE)

The TCE is the qualification awarded to students who complete Senior High School in Tasmania. It is recognised throughout Australia by universities and employers. Students must complete two years of study at Senior High School to achieve this qualification and reach a minimum level in English, Mathematics.

Australian Tertiary Admission Rank (ATAR)

In Australia, all universities allocate places to students based on their Year 11 and 12 school results. These results form the student's ATAR. At Senior High School, students are able to select any subjects that align with their aspirations and interests, however to obtain an ATAR and gain access to an Australian university students will need to study at least four 'pre-tertiary' (Level 3 subjects). Students who perform well in their Level 3 subjects will earn a higher ATAR, which allows access into more courses at university.

For more information on TCE and ATAR, visit www.tasc.tas.gov.au



Junior High School (Year 7 – 10)

Junior high schools have a focus on teaching the fundamental core subjects, and also offer a wide variety of elective subjects and enrichment activities. Junior High Schools follow the traditional school model and students are required to wear school uniform and address teachers formally. Junior High School class sizes are typically 20–25 students, allowing every student one-to-one time with their teachers.

Subjects offered

In Year 7–8 the curriculum supports the development of knowledge, understanding and skills in eight major learning areas: English, Mathematics, Science, History, Geography, Health and Physical Education, Art, Design and Technology. Students are able to access the various additional programs offered by their school.

In Year 9–10, students study the core subjects: English, Mathematics, Science, Health and Physical Education, Humanities and Social Sciences. Students also select two elective subjects to study in-depth. These electives include Art, Technology, Music, Design and Languages.

Sample timetable

Time	Monday	Tuesday	Wednesday	Thursday	Friday
8:40am – 8:50am Home Group	Home Group	Home Group	Home Group	Home Group	Home Group
8.50am – 10:05am Period 1	English	Science	Music	Mathematics	English
10:05am – 10:25am Break					
10:25am – 11:40am Period 2 & 3	Mathematics	Outdoor Education	English	Art	Science
11:40am – 12:00pm Break					
12:00pm – 1:15pm Period 4	Outdoor Education	Society and History	Mathematics	Society and History	Outdoor Education
1:15pm – 1:50pm Break					
1:50pm – 3.05pm Period 5	Music	Art	Society and History	Science	Society and History
Activity		Basketball		Science club	

If you would like advice on choosing your school, please contact Tasmanian Government Education International.

Senior High School (Year 11 – 12)

Tasmanian Senior High Schools allow students to specialise in a wide variety of high-level subjects with dedicated facilities. Senior High Schools prepare students for university life – students are not required to wear uniforms, address teachers by their first names, and are responsible for their own attendance.

Subjects offered

A wide variety of academic and recreational subjects are available at the Senior High School level. Course counselling is available to ensure that students choose to study the most relevant subjects for their further education or career plans.



Sample timetable

Time	Monday	Tuesday	Wednesday	Thursday	Friday
8:30am – 8:45am	Home Group	Home Group	Home Group	Home Group	Home Group
8.45am – 10:10am	EAL 3	Outdoor Education 2	Biology 3	Maths Methods 3	Physics 3
10:10am – 10:30am	Morning tea	Morning tea	Morning tea	Morning tea	Morning tea
10:30am – 12:00pm	EAL 3	Outdoor Education 2	EAL 3	Maths Methods 3	Physics 3
12:00pm – 1:00pm	Lunch/tutorials	Lunch/tutorials	Lunch/tutorials	Lunch/tutorials	Lunch/tutorials
1:00 – 2:25pm	Biology 3	Maths Methods 3	Physics 3	Outdoor Education 2	Biology 3
2:30pm – 4:00pm		English Foundation 2		English Foundation 2	

If you would like advice on choosing your school, please contact Tasmanian Government Education International.



Short-term study programs

Tasmanian Government Schools offer tailored short-term study programs with flexible start dates which offer international students the opportunity to participate in a flexible study program, combining a traditional academic experience with a variety of extracurricular activities.

Study abroad program

Study abroad program offers a wonderful opportunity for high school and college students to study in Tasmanian Government Schools from 3 months to 1 year (1 term to 4 terms), live with a family in homestay, and experience the unique Tasmanian lifestyle.

Study tour program

Our study tour program welcomes groups of students from around the world. The “taster” experience offers students an opportunity to study in Tasmanian Government Schools, enrich their global competencies and helps improve their English.

The flexibility in program development allows students to customise the best study experience to learn about Australian culture, and develop long-lasting friendships with local students.

An English-speaking chaperone is required to accompany each study tour group at each host school to assist with supervision and student support.

Study tour programs

Our study tour programs provide students with the opportunity to experience what it's like to study in a Tasmanian Government School. Students will attend classes alongside local students and experience a range of different subjects including Maths, English, Science, History, Music, Drama, Foods and Hospitality and Physical Recreation.

The school immersion experience provides an opportunity for students to learn about Australian culture and develop their English language skills.

Local homestay

Tasmanian Government Education International provides homestay services for students participating in study tour programs. This service enlists friendly and caring local families to look after international students.

School coordinator

A dedicated school coordinator is provided to help manage and plan students' study experience. The coordinator will support students to make the most of their time in school.

Optional additions

In addition to the features included in the study tour program, there are a range of optional extras that can be included for an additional fee.



English lessons

Dedicated classes focussed on teaching English as an Additional Language (EAL) can be arranged. Professional teachers can deliver customised programs based on the students' age, interests, and varying levels of English understanding. It is recommended that dedicated English classes make up no more than 50 per cent of your students' time at school, so that they gain the benefits from integrating with local students.

Educational excursions

Educational excursions can be arranged at additional cost. Day tours focus on providing students with an engaging, hands-on educational experiences.

Sightseeing excursions

In addition to the school and homestay program, a range of sightseeing excursions can be arranged at an additional cost. These excursions take students on tours around some of Tasmania's most popular tourist attractions.

Welcome and departure event

A welcome and/or departure event can be provided for visiting students. This may be in the form of an afternoon tea or barbeque. Such events can be a great introduction to Australian culture and provide students with an opportunity to settle into their new environment.



As part of a study tour experience in Tasmania, students able to:

- learn to value their own cultures, languages and beliefs, and those of others
- develop greater intercultural understanding and cultural competence
- increase their intercultural learning and become more collaborative in their communities
- foster greater self-awareness and leadership skills
- become better global citizens.

Conditions

Group size

The minimum group size is 15 students. The maximum group size per school is 20 students. Please note that multiple schools can be engaged to cater for larger groups.

Age of participants

The recommended minimum age is 14 and the maximum age is 18.

Duration

Tours may run for a minimum of 6 nights up to a maximum of 4 weeks

School program

Integration with local classes will make up at least 40% of the school program (minimum of four half-day sessions per week).

Tour escort

An English speaking escort must accompany the group to assist with supervision and student support. Escorts may include accompanying adults or teachers from the overseas school, as well as local or overseas agency staff. Escorts need to arrange their own accommodation.

Travel insurance

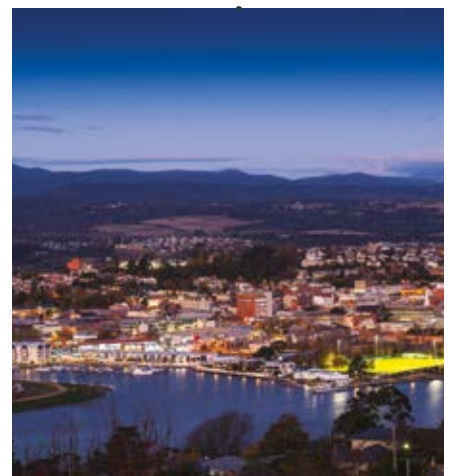
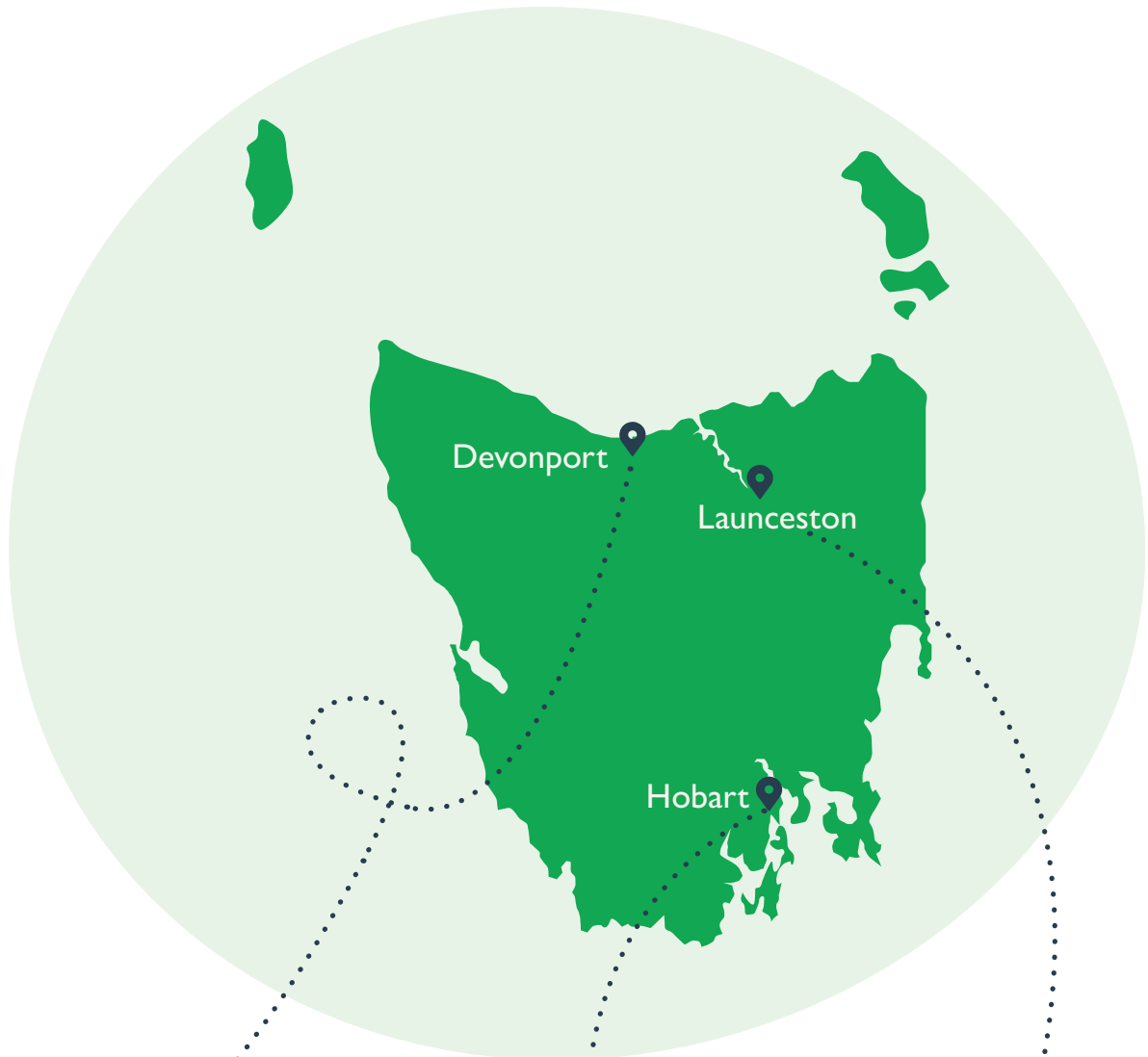
Participants must be covered by travel and health insurance during their stay in Tasmania. This is to be organised by the agent or tour operator.

Planning a study tour

Each study tour is a unique experience based on the options that are included to meet each group's specific needs and interests.

Contact Tasmanian Government Education International for further information on study tour programs.

Campus guide





Clarence High School



Address: 25 Wentworth Street, Bellerive TAS 7018

Year established: 1959

Number of students: 560

Clarence High School was the first high school established on Hobart's Eastern Shore and has a proud record of academic and sporting achievement, as well as a reputation for excellence in the creative arts and information technology.

The curriculum at Clarence High School aims to positively engage all students with relevant and challenging programs of study, and the school is constantly exploring new ways to better prepare students for the 21st century.

Clarence High School is located by the picturesque Bellerive beach and features extensive school sporting grounds and an impressive workshop for students to develop practical and creative design skills.

Key subjects and extracurricular activities:

- Ski trip
- Extensive school band program with biannual trips intrastate, interstate and overseas
- Debating Team/Club
- Design and Applied Technology



Kingston High School



Address: Kingston View Drive, Kingston TAS 7050

Year established: 1972 (new campus established 2011)

Number of students: 750



Kingston is a beautiful and quiet suburb situated south of Hobart's city centre.

Kingston High School, overlooks the coastline of southern Hobart, and integrates the design of the buildings into the landscape, using sustainable materials, green roofs, wetlands, and vegetable and native gardens. The design embraces passive solar and low energy use and every building offers views of the Derwent River.

Situated next to the Kingborough Sports Precinct, Kingston High School is consciously evolving into

an academy for sports, health and wellbeing. As the school is located only five minutes' drive from the beach, the school is able to incorporate the local coastline into its curriculum for subjects such as Outdoor Education.

Key subjects and extracurricular activities:

- Robotics
- Athlete Development Program
- Game Design and Programming
- Advanced studies in mathematics for talented students



Taroon High School



Address: Meath Avenue, Taroon TAS 7053

Year established: 1958

Number of students: 1080

Taroon High School is located on the banks of Hobart’s beautiful Derwent River, with waterfront access to its own beach.

The school has an excellent program for international students and a proud history of high achievers progressing on to Australia’s most prestigious universities.

English language classes at Taroon High School are conducted in small, informal groups and students work towards developing greater fluency with written and spoken forms of English. The school features extensive

marine-based programs including Marine Science and Outdoor Education, and activities such as kayaking and snorkelling. It also offers a wide variety of Arts and Music based subjects.

Key subjects and extracurricular activities:

- Film Production courses
- Animation and Video Production
- Advanced Mathematics classes for talented students
- Psychology



Rose Bay High School



Address: Kaoota Road, Rose Bay, Hobart TAS 7015

Year established: 1963

Number of students: 700

Rose Bay High School is located on Hobart's Eastern shore, with panoramic views over Hobart's city centre, Mount Wellington and the Derwent River.

It is the largest Junior High School on Hobart's Eastern shore and offers a wide variety of subject choices to suit each individual student. The school is easily accessible via public transport and is a short 5-minute drive to Hobart's CBD.

The school is very active in high level competitions in areas including Science (State Winner 2019),

Debating, Sports, Robotics, and Music (Concert Band State Winner 2019). These programs allow students to experience their subjects in-depth and have the opportunity to expand their learning through participation in various additional programs.

Key subjects and extracurricular activities:

- Engineering
- Creative Writing
- Advanced Mathematics
- Science courses and competitions



Hobart City High School



Address: 228 New Town Road, New Town TAS 7008

Year established: 2022

Number of students: 1200

Hobart City High School (HCHS) is Tasmania's newest co-educational high school located in Hobart.

Established in 2022, with a combined 186 years of inherited tradition from two campuses, Ogilvie and New Town. Both of these schools have a reputation for excellence in academic, sporting and cultural pursuits. HCHS has a commitment to inspire students to succeed as connected, resilient, creative and curious thinkers in a diverse and inclusive global community.

HCHS offers modern ICT, science and technology, arts and drama facilities, and excellent sporting facilities. The school's enrichment program gives students the opportunity to delve into their areas of personal

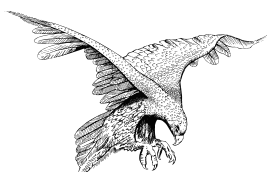
interest and ignite their curiosity, creativity, innovation and problem-solving skills. International students are welcomed and offered a range of programs to help them develop fluency in English, succeed academically, and integrate happily into the school community.

Key subjects and extracurricular activities:

- STEAM (Science, Technology, Engineering, Arts and Mathematics)
- English Writing
- Music
- Outdoor Education
- Rowing



Prospect High School



Address: Ralph Street, Prospect TAS, 7250

Year established: 1965 (a new \$8.5 million school campus completed in February 2017)

Number of students: 410

Prospect High School is located in the picturesque city of Launceston.

The school is situated in a bush setting with views of the surrounding mountains. It has a long history of welcoming international students from across the world and maintains a sister school/exchange program with Kagawa, Japan.

In 2017, the school completed a new \$8.5 million campus upgrade, and students can now benefit from the very modern facilities and classrooms. Prospect High School has a very extensive international student

program and would nicely suit students who would benefit from extra support.

Key subjects and extracurricular activities:

- Design and Technology
- Lifestyle and Fashion
- Drama
- Advanced Mathematics
- Creative Writing



Queechy High School



Address: 161 Penquite Road, Norwood TAS 7250

Year established: 1959

Number of students: 680

Queechy High School is located in the suburb of Norwood, five minutes from the Launceston CBD.

Queechy High School has spacious school grounds with several large grassy areas, as well as being within walking distance of major parks and recreational areas. Queechy has created a learning environment that caters not only to students who are academically talented and inclined, but also those passionate about the arts, sporting endeavours and involvement in a tight knit and vibrant community.

Queechy High School is very active in Science, Engineering, Technology and Mathematics (STEM) and offers several outstanding opportunities to its students. These include the FI in Schools program in which students design and build a miniature car, and SUBS in Schools program, in which students explore

engineering, coding and electronics to design and build operational miniature submarines.

Queechy High School is also the only school outside of the USA to offer Project Lead the Way, which involves applying mathematics, science and engineering standards to design solutions for real projects.

Key subjects and extracurricular activities:

- FI in Schools engineering program
- SUBS in Schools engineering program
- Project Lead the Way – a world-class STEM program
- Visual Arts
- Extended Science
- Basketball Academy



Devonport High School



Address: 91 Best Street, Devonport TAS 7310

Year established: 1916

Number of students: 370

Devonport High School situated in the city centre of Devonport, in North West Tasmania.

The school prioritises the wellbeing and learning needs of students and families. Every student is well known by staff which allows individual talents and aspirations to be nurtured through a wide range of academic programs and challenges, extra-curricular activities and alternate learning environments.

Devonport High School promotes learning for life and endeavours to equip students with the attributes and dispositions that enable them to take responsibility for and be empowered in their own learning.

An \$11 million school redevelopment, completed in 2022, has empowered students and teachers to move away from traditional classroom settings to explore best practice to support engagement and learning.

Key subjects and extracurricular activities:

- Mathematics Extended
- Science Extended
- Outdoor Education
- Performing Arts (Visual Art, Music & Drama)



Burnie High School



Address: Fidler Street, Cooe TAS 7320

Year established: 1916

Number of students: 570

Burnie High School is a co-educational high school located in Cooe, in North West Tasmania.

The school delivers a wide range of programs aimed at developing knowledge, skills and understanding, as well as nurturing students' personal growth.

Burnie High School promotes learning for life, and endeavours to prepare students to be able to deal with future challenges and triumphs. The school inspires students to achieve personal excellence and become independent learners who have clear goals and a sense of purpose, and to make the most of their talents, skills and abilities in their future careers. In addition to the learning opportunities provided in classes, Burnie High School offers a unique and diverse range of extra-curricular groups and activities for

students to further engage and challenge themselves in their education, life experience and development.

Key subjects and extracurricular activities:

- Arts
- Health and Physical Education
- Humanities and Social Sciences
- Languages (Italian)
- STEAM
- Vocational Education Training – Pharmacy and Engineering
- Performing Arts
- Farm – Agriculture Studies



Smithton High School



Address: Mill Rd, Smithton TAS 7330

Year established: 1938

Number of students: 345

Smithton High School is a co-educational school located in the North West of Tasmania. Smithton High School provides a supportive and collaborative teaching and learning culture; developing life skills for the next generations and to support continued growth in the region.

Smithton High School takes pride in the academic, creative and sporting achievements of our students, past and present. We provide many educational opportunities for students to learn in different ways and for different purposes.

A wide range of courses are available, designed to cater for the individual needs and aspirations of our students. Students are encouraged to make every learning experience an opportunity to reach their full potential. Smithton High School inspires students to meet the challenges, aim high and achieve their best.

Key subjects and extracurricular activities:

- Art, Drama, Music, Food Studies, Outdoor Education, and Paddock to Plate.
- Extension Maths
- Extension English and History
- Work Experience Placement
- VET courses available at the Trade Training Centre



Elizabeth College



Elizabeth College
inspired resourceful learners

Address: 256 Elizabeth Street, Hobart TAS 7000

Year established: 1967

Number of students: 1000

Located in the centre of Hobart, Elizabeth College is proud of the excellent teaching and learning programs it delivers.

The College's location in the centre of Hobart allows students to experience Hobart city each day and makes Elizabeth College very convenient for transport between home and school. Students of more than 35 different nationalities are enrolled at Elizabeth College, enriching the educational outcomes and experiences for all students.

Elizabeth College has an outstanding record of academic excellence and provides its students a perfect preparatory environment for university

study. The school supports high achieving students and provides all learners the opportunity to achieve their educational goals. The School of Business, in partnership with the University of Tasmania, allows students to study business, accounting and economics with engagement from university staff and local businesses. This provides a perfect introduction to high level pre-university business studies.

Key subjects and extracurricular activities:

- Business Studies
- Art
- Economics
- Mathematics



Rosny College



Address: 20 Bastick Street, Rosny TAS 7018

Year established: 1973

Number of students: 1265

Rosny College is located on spacious grounds on Hobart's Eastern shore with beautiful water views.

It is known for its excellent learning experiences, facilities, vocational education and its wide array of subject choices. Rosny College has a strong history of outstanding academic performance across all disciplines. The College is located a short 15-minute bus drive from the city centre of Hobart and also features easy access to recreational areas and beaches in Hobart.

International students at Rosny College have achieved some significant academic outcomes including the winning of the official TASC Outstanding Achievement

Award and multiple prizes at the Intel International Science and Engineering Fair (ISEF) in Phoenix, Arizona, USA alongside over 1800 high school students from 75 countries.

Key subjects and extracurricular activities:

- Media, Film & Audio Design
- Outdoor Education
- Mathematics
- Drama and Performing Arts
- Robotics & Coding
- Housing and Design



Hobart College



Address: Olinda Grove, Mount Nelson TAS 7007

Year established: 1913

Number of students: 1200

Hobart College is an exciting learning community with a long history of outstanding academic, sporting and cultural achievements.

Hobart College has educated 20 Rhodes Scholars, students who have gone on to study at the University of Oxford, UK with a full scholarship. Every year many Hobart College students are among the top 100 Tasmanian academic performers, each achieving an Australian Tertiary Admissions Rank (ATAR) of 98.5 or above.

The international program at Hobart College has an extensive history of over 30 years, and the school has been welcoming large numbers of international students for many years. Hobart College has developed a comprehensive support program for

international students to integrate with the local student population.

Hobart College is located in a bushland location 15 minutes by bus from the centre of Hobart. The school uses its location to facilitate studies into sustainability and the natural environment. The College also has a high-end mathematics and science department to facilitate complex studies.

Key subjects and extracurricular activities:

- Introduction to Nursing VET course
- Mathematics
- Sustainability Studies
- Orienteering



Launceston College



Address: 107–119 Paterson St, Launceston TAS 7250

Year established: 1913

Number of students: 1450

Launceston College is the largest school in Tasmania. It is located in the centre of Launceston city, beside the river, parklands, shops and cafés.

The school offers a wide array of subject choices and has built a tradition of excellence for over 100 years.

Launceston College has an advanced STEAM (Science, Technology, Engineering, Arts and Mathematics) department, with high tech facilities allowing for all manner of exciting projects to be undertaken by students. Students can use technologies such as virtual reality, 3D printing and laser cutting to create prototype products. Students are encouraged and supported to apply their skills in the real world by starting their own small business, with teaching staff acting as mentors for the students.

Other advanced facilities include a swimming pool and weight gym, fully equipped media production facilities, and a large art department. Launceston College also features and outstanding support for international students, with an experienced team of International Student Advisors helping students to make the most of their time at the school.

Key subjects and extracurricular activities:

- Engineering & Object Design
- Digital Enterprise Technology: Game Making and Design
- Graphic Design
- Advanced Mathematics
- Art Production



Newstead College



Address: 30 Cyprus Street, Launceston TAS 7250

Year established: 1996

Number of students: 550

Newstead College is a modern school with state-of-the-art facilities, situated in a quiet residential suburb within 10 minutes of the centre of Launceston.

The College provides international students with a very supportive and personalised learning environment, and the smaller size of the college means that students will receive a high degree personalised attention and support.

Newstead College maintains a partnership with the internationally recognised Australian Maritime College

to offer subjects to Year 11 and 12 students. It also offers an eSports enrichment program, with the school producing eSports tournaments for students to participate in.

Key subjects and extracurricular activities:

- eSports program
- A range of high quality VET programs including Hospitality and Cookery
- Music & Audio Design
- Drama & Theatre Production



Don College



DON COLLEGE

Address: 87 Watkinson St, Devonport TAS 7310

Year established: 1973

Number of students: 800

Don College is located in Devonport, and nestled in bushlands bordering the Don River Reserve and with private beach access.

The school's unique natural environment creates opportunities for learning and impacts positively on school culture and wellbeing. Specialist teachers individualise learning across a broad variety of courses focussing on building aspirations, hope, engagement and lifelong learning.

Don College is a perfect choice for students who want to enjoy Tasmania's natural environment, with beaches, bush walking tracks and mountain biking trails either in the school grounds or close by. It is common for friendly local wallabies to be seen on campus.

The school has a very strong Visual Arts program; Don College students, who represent 10% of the Tasmanian cohort for these courses, achieve 30% of Exceptional Achievements (the highest academic award). Don College also offers comprehensive range of Vocational Education and Training courses across 22 industry areas, including in niche areas such as Animal Studies.

Key subjects and extracurricular activities:

- Animal Studies
- Outdoor Education
- Computer Graphics and Design
- Design and Production



Hellyer College



Address: 41-43 Mooreville Road, Burnie TAS 7320

Year established: 1976

Number of students: 670

Hellyer College is a dynamic place of learning that is focussed on providing a range of learning opportunities for all Year 11 and 12 students in Burnie and its surrounding regions. Hellyer College is designed to personalise learning and ‘Create Your Future’.

With over 90 subjects to choose from, Hellyer College offers a range of options, including academic pathways to the University of Tasmania, and Vocational Education and Training (VET) and with supportive links to TasTAFE and other education providers.

The friendly size of the college ensures all students have the opportunity to work in smaller classes with expert teachers. The specialised Year 11 and 12 learning environment is a welcoming and supportive space meeting the needs of all learners.

College facilities, include a STEAM Makerspace, photography and art suites, a well-equipped weight training and fitness room, school gym and climbing wall, tennis courts and sports oval, a performance studio, a commercial kitchen, and technology and design workshops.

Hellyer College has a student accommodation residence onsite that caters for up to 80 students.

Key subjects and extracurricular activities:

- Creative arts and Performing Arts
- Outdoor Education and leadership
- Humanities and Social Sciences
- Technologies
- Mathematics specialised 4, Chemistry 4, and Physics 4
- National Titration Competition
- University High Achiever Program

Student Accommodation

Live with local families, and enjoy a real cultural experience

Tasmanian Government Education International office manages the homestay program for international students studying in Tasmanian Government Schools. The homestay program is directly coordinated by our in-house homestay team, and supported by a 24/7 phone service in case of emergency.

Our homestay hosts will provide students with:

- a safe, supportive and welcoming home environment
- a private, furnished bedroom
- a dedicated study area with a desk, chair and lamp
- three nutritious meals per day, plus snacks
- use of facilities (e.g. TV, iron, vacuum cleaner, laundry)
- reasonable use of WiFi for study, research and communication.

Homestay hosts support students on arrival, with familiarisation in their new environment, and also offer the opportunity for students to participate in family, community and Australian cultural activities.

“They are very nice. When I arrived in Hobart for the first time, they picked me up at the airport. My family likes to share their life with their students. When I have questions, I always ask my homestay to help me. They enjoy helping me and they take me when they travel and share Australian culture with me. I feel so lucky. My homestay father is a good cook. He can cook Chinese, Korean, Japanese, Malaysian, Greek, Italian and Mexican food. When I come home from school, they always ask me about my school life and progress and they are happy to help when I have tests for English.”

Guanli Chen, international student at Hobart College



Homestay hosts accept duty-of-care for students outside of school hours, and support in monitoring each student's health and wellbeing.

Our dedicated homestay team ensures that:

- every family has a good character clearance, registered with the Tasmanian Government
- we inspect every home to determine suitability for use as student accommodation
- students have ongoing support from our statewide homestay team.





Lifestyle

Food

Meals are included as part of our homestay service however, if you like eating out at restaurants, there are a range of wonderful places offering local and international cuisine. For an Asian dish at a casual restaurant or cafe, expect to pay AU\$10–\$20. For a fresh seafood meal, expect to pay approximately AU\$30.

Public transport

Tasmania's cities are simple to get around. Buses are the mode of transport. In Tasmania, international students can get a discount on their bus fares. The weekly cost is AU\$25–27. A prepaid card is available from the bus company, so bus fares can be paid at a discounted price.

Working

Finding work in Tasmania is just like finding work anywhere else. The availability of jobs is not guaranteed, however there are plenty of people to help you in your search for a job and give you advice. Students often find work in hospitality and service industries, and earn approximately AU\$20–\$25 per hour. For information on student visa work conditions visit <https://immi.homeaffairs.gov.au/>

Tasmania's temperate climate



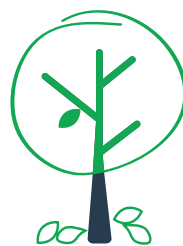
Summer

December,
January, February
24°C



Autumn

March, April, May
22°C



Spring

September,
October, November
16°C



Winter

June, July, August
14°C

Temperatures represent average daily highs



**Top 8 things
to do in
Tasmania**





1. Enjoy the freshest seafood in the world.
2. Climb the spectacular scenic slopes of Cradle Mountain.
3. Meet a Tasmanian devil and feed a kangaroo at Bonorong Wildlife Sanctuary.
4. Browse locally made goods at Hobart's historic Salamanca Market.
5. Get off-road on the world's best mountain bike tracks at Blue Derby.
6. Step into the bizarre world of old and new art at MONA.
7. Take an iconic selfie at Wineglass Bay.
8. Relax in the sun and go for a swim at Launceston's Cataract Gorge.



Student support and other services

Each school has a dedicated and caring International Student Advisor (ISA) who will be students' first point of contact. The ISA will provide ongoing support throughout students' enrolment at the school.

24/7 emergency phone line

A 24 hour per day, 7 day per week emergency phone line is provided for all international students studying at Tasmania's Government Schools. Our friendly staff are here to help.

Language and learning support

Our schools have specialised teachers who teach English as an additional language and provide ongoing assistance to students. They teach students the English language and literacy skills needed in all subjects.

Pre-departure information

Our team will send students a helpful guide before they leave their home country. We are also here to help if you have any questions about life in Tasmania.



Airport pick-up*

Students will be picked up from the airport and taken to their accommodation when they first arrive.

*Airport pick-up is only available to students staying in homestay.

Banking and phone set-up

Upon students' arrival in Tasmania, we assist with setting up a mobile phone and a bank account.

Orientation

International Student Advisors conduct an orientation for students when they start school. This will cover enrolment, timetable and expectations.

Study facilities

Modern library and computer facilities are available at each campus to all students throughout the study week.

Buddy system

The school will organise a buddy for international students. Buddies are local Tasmanian students who help students settle in.

2024 international fees and key dates

2024 term dates

Students can enrol at any time throughout the school year. However, it is recommended that students complete the full academic year for Year 11 and 12.

	Term 1	Term 2	Term 3	Term 4
START	Thursday 8 February	Monday 29 April	Monday 22 July	Monday 14 October
END	Friday 12 April	Friday 5 July	Friday 27 September	Thursday 19 December*

*Senior High School finishes in November before end of year exams

Tuition fees

Minimum study period is 1 term (approx. 10 study weeks). Fees listed below cover tuition fees, including English language tuition and enrolment in enrichment activities. Fees, uniforms and specific excursions are extra. Contact Tasmanian Government Education International for more information.

	Annual Fee	Weekly Fee
Primary School (Years 1–6)	AU \$14,000	AU \$380 per week
Junior High School (Years 7–10)	AU \$13,300	AU \$330 per week
Senior High School (Years 11–12)	AU \$14,400	AU \$380 per week

Homestay fee

An annual homestay management fee of AU \$200 applies.

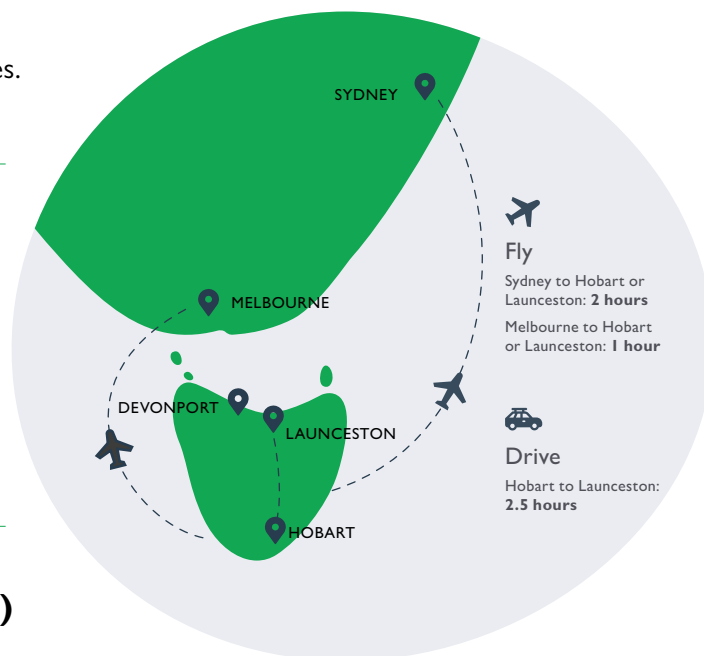
Years 7–12 AU \$330* per week

* Effective from 13 July 2024; homestay fees will increase from AUD\$330 to \$340 per week.

Administration fee

The annual administration fee covers application and school placement. A minimum AU \$75 fee will be applied.

AU \$75 per term Maximum AU \$300 per year



Overseas Student Health Cover (OSHC)

Monthly AU \$55 (approximately)

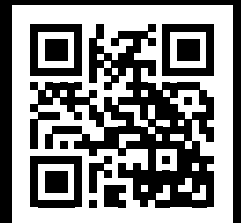
Annually AU \$640 (approximately)



Tasmanian
Government

**Tasmanian Government
Education International**

Email: info@geti.tas.gov.au
Tel: +61 3 6165 5727



study.tas.gov.au
(or scan QR Code)

DISCLAIMER: The information contained in this publication is correct at the time of publication October 2023. Every effort has been made to ensure details are correct and accurate, however Tasmanian Government Education International reserves the right to change information without notice.

CRICOS Provider Name: Government Education and Training International Tasmania. Provider Code: 03352G

Information and prices are correct at time of printing.
Photo credits: Tourism Tasmania, Luke Tscharke, Stu Gibson, City of Hobart, Sean Scott.